

## LOCATION

### BTI Training Center

**"Instituto Eduardo anitua"**

Calle Jacinto Quincoces, 39  
01007 Vitoria (SPAIN)



## SEMINARS DATE

Schedule 9:00 a.m - 7:00 p.m.

- February 8, 9 & 10
- May 17, 18 & 19
- October 4, 5 & 6

## TUITION

**Enrollment tuition \$ 2700**

**Includes** professional information packets, research articles, transfer from and to Bilbao international airport, 4 nights accommodation (breakfast included), coffee breaks, lunches, welcome and farewell dinners on Monday and Wednesday.

## CERTIFICATION

Participants will receive a **Certificate of Attendance**  
(ongoing CEU accreditation)

Accredited & Sponsored by:  
**BTI of North America**



Approved PACE Program Provider FAGD/MAGD Credit Approval does not imply acceptance by a state or provincial board of dentistry or AGD endorsement. (4/1/2008-3/31/2011)

- \* Given the limited number of seats enrollment is compulsory
- \*\* The information and data included in this program is updated at the time of printing and may vary

Photos and videotaping are prohibited during the seminars

The AULA BTI seminar includes a three day intensive course presenting a new Biological Approach to Implantology based on the most recent data and techniques developed by the Biotechnology Institute.

The purpose of the course is to offer the attendees an innovative working method and predictable protocols which are the result of advanced scientific research and extensive clinical experience. The seminars are based on a complete and multidisciplinary approach starting from the treatment planning phase to bone regeneration techniques. They also focus on necessary protocols for the treatment of complex rehabilitations through live surgeries in closed circuit, practical workshops and specialized conferences coordinated by Dr. E. Anitua and his team of experts.

Doctors attending the seminars will obtain customized training and will be exposed to the modern facilities offered by the prestigious BTI Training Center "Instituto Eduardo Anitua" in Vitoria-Gasteiz (SPAIN)."



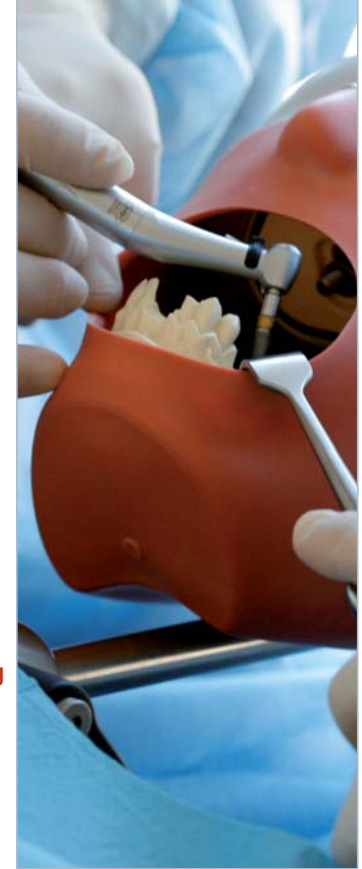
**For more information and registration contact:**

**BTI of North America**  
1730 Walton Road, Suite 110  
Blue Bell, PA 19422  
Tel: (215) 646-4067 • Fax: (215) 646 - 4066  
E-mail: [info@bti-implant.us](mailto:info@bti-implant.us)  
Website: [www.bti-implant.us](http://www.bti-implant.us)

## AULA BTI

Seminar Schedule  
USA 2010

**International Continuing Education**



**"Prince Felipe Award  
for Technological  
Innovation"**



In collaboration with



## AULA BTI PROGRAM

### :: BTI Biotechnology

- The approach to implantology according to the knowledge and techniques of the Biotechnology Institute

### :: Live Surgeries of Complex Rehabilitations with Dr. E. Anitua

### :: Diagnosis and Digital Treatment Planning

### :: A Biological Approach to Implant Osteotomy

- Drilling technique without irrigation and implants insertion protocols

### :: PRGF® Technology

- Growth factors, scientific bases and clinical works

### :: Advanced Surgical Techniques

- Treatment of atrophic jaws (expansion and split techniques, sinus lift, vertical growth,...)
- Innovative concepts in biomechanics (short implants, immediate loading,...)

### :: Surgical Technique for Sinus Lift

- Indications and protocol for sinus lift
- Complications and complications management in sinus lift
- Alternative approach to sinus lift (short implants and crestal approach)

### :: Immediate Loading and Complex Rehabilitation Using the BTI Technique

- Indications and protocols for immediate loading
- Planning single tooth, partial and full edentulism rehabilitation

### :: Practical Workshop

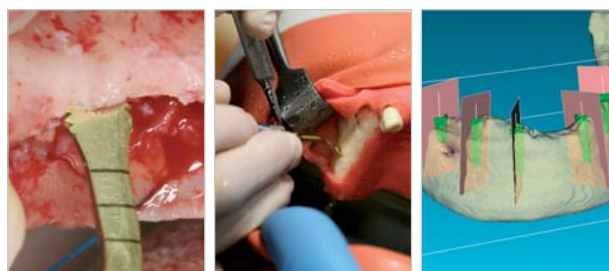
- PRGF® Technology: obtaining protocol
- PRGF® manipulation: obtaining grafts and fibrin membranes
- Drilling protocol and implant placement on models
- Treatment planning using BTI Scan® II software



Training room



Live surgery



Practical workshop